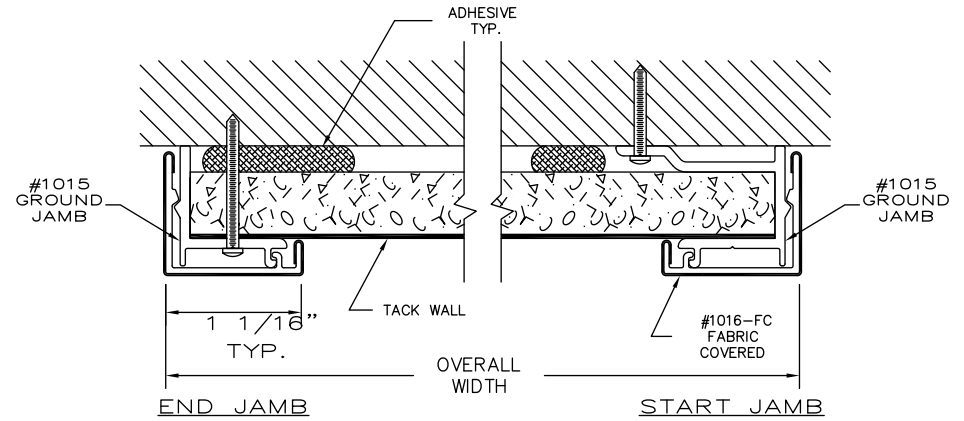
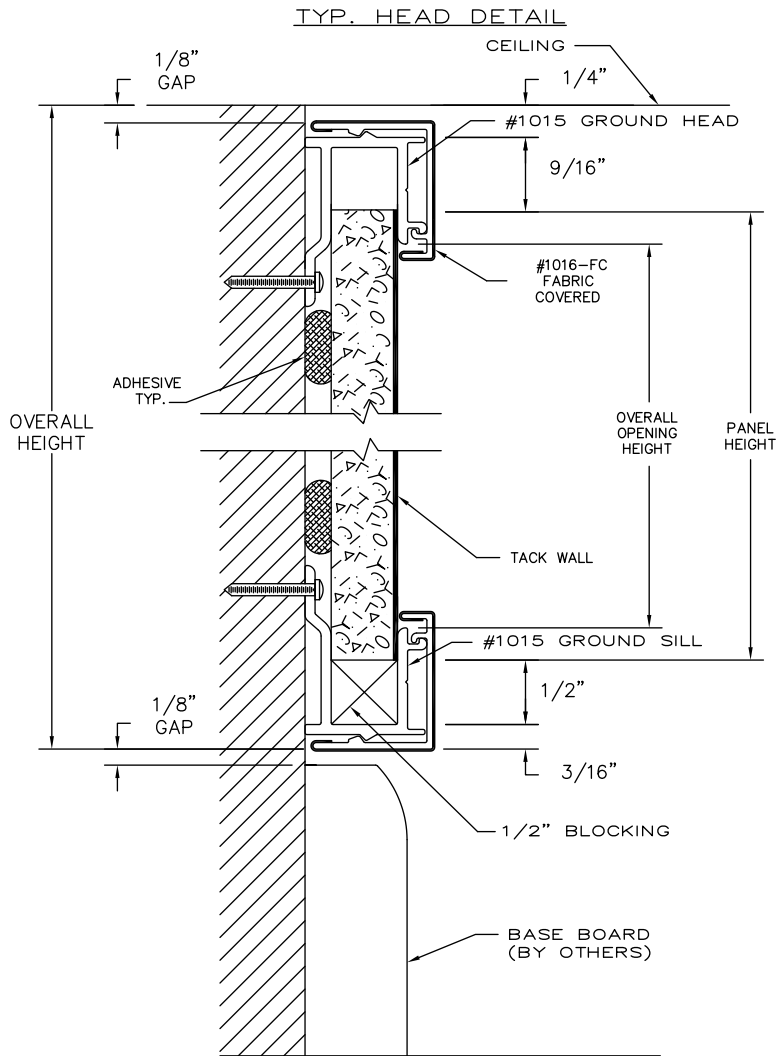


# CLARIDGE TACK WALL UNITS TRIM SECTION DETAILS



NOTE:  
END JAMB TRIM WITH BACK LEG REMOVED  
CAN BE INSTALLED DIRECTLY OVER END OF  
PANEL WITHOUT REQUIRING ANY SIDEWAYS  
MOVEMENT, THUS ALLOWING WALL TO WALL  
INSTALLATION.

NOTE:  
AFTER FIRST PANEL IS  
SEATED IN HEAD AND SILL  
TRIM IT MUST BE MOVED  
SIDEWAYS TO SLIDE INSIDE  
JAMB TRIM.

