

**Specifications—Supra**

\_\_\_\_\_ projection screens, size \_\_\_\_\_ h. x \_\_\_\_\_ w., electrically operated 110-120V. AC, 60 hz. Three-wire motor mounted inside screen roller, instantly reversible, lifetime lubricated, with internal thermal overload protector and electric brake. Motor mounted on rubber vibration insulators. Preset, accessible limit switches. Entire roller and drive assembly removal through bottom of case.

Roller to be 3" dia. metal, mounted on rubber insulated supports. Viewing surface of fiberglass matt white, fire and mildew resistant. Large screens require one or more horizontal seams. Bottom of viewing surface doublestitch hemmed around tubular steel dowel. Case of 3/4" warp resistant composition wood, unspliced. Wiring compartment metal lined. Bottom of case fully enclosed by two panels, mounted with full length continuous hinge. One panel to open and close automatically as screen operates. Second panel opens manually for access to electrical connections, limit switches and screen surface. Hinges mounted to allow matching of bottom panels to ceiling. Case painted with flat black primer.

Three-position control switch, complete with coverplate, shall stop or reverse screen at any point. Entire unit certified by Underwriters' Laboratories, Inc. for the U.S. and Canada (except when furnished with Panamax viewing surface).

Size H x W	Case Length	Net Wt. (lbs.)	Qty.
<b>AV Format</b>			
50" x 50"	5'5"	60	
60" x 60"	6'3"	70	
70" x 70"	7'1"	75	
84" x 84"	8'3"	80	
6' x 8'	9'3"	85	
8' x 8'	9'3"	100	
7' x 9'	10'3"	105	
9' x 9'	10'3"	115	
8' x 10'	11'3"	115	
10' x 10'	11'3"	120	
9' x 12'	13'3"	125	
12' x 12'	13'3"	130	

**Please Mark Appropriate Selections**

**Select Viewing Surface:**

- Fiberglass Matt White

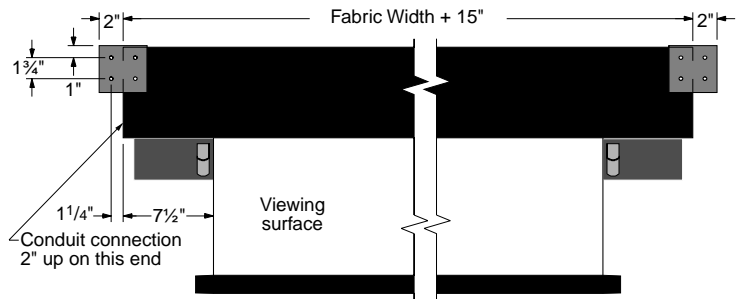
**Select Case Construction:**

- Standard
- Offset

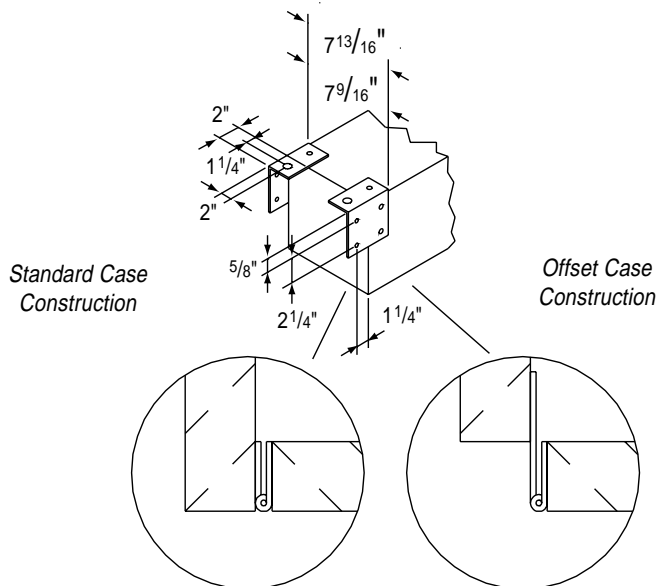
**Optional Accessories:**

- Extra Drop (Total screen height cannot exceed 12')  
Select white or black \_\_\_\_\_  
Length of extra drop required \_\_\_\_\_  
Number of control stations required: 1, 2, 3, or 4.
- 115 Volt
- 24 Volt

**Case Dimensions & Methods Of Installation**



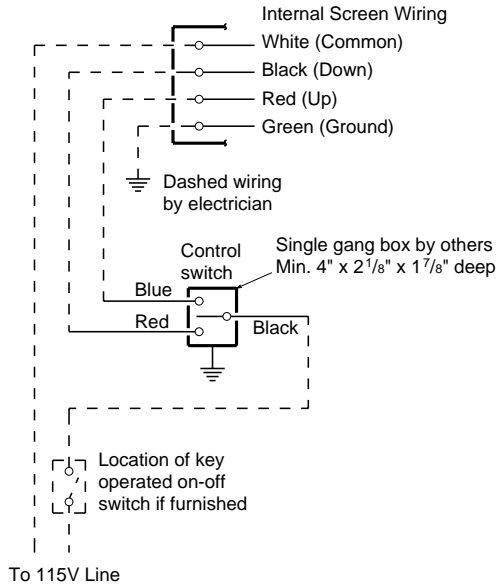
Case height—7<sup>9</sup>/<sub>16</sub>". Case width—7<sup>13</sup>/<sub>16</sub>" (including brackets). Mounting brackets extend 2" in length beyond each end of case.



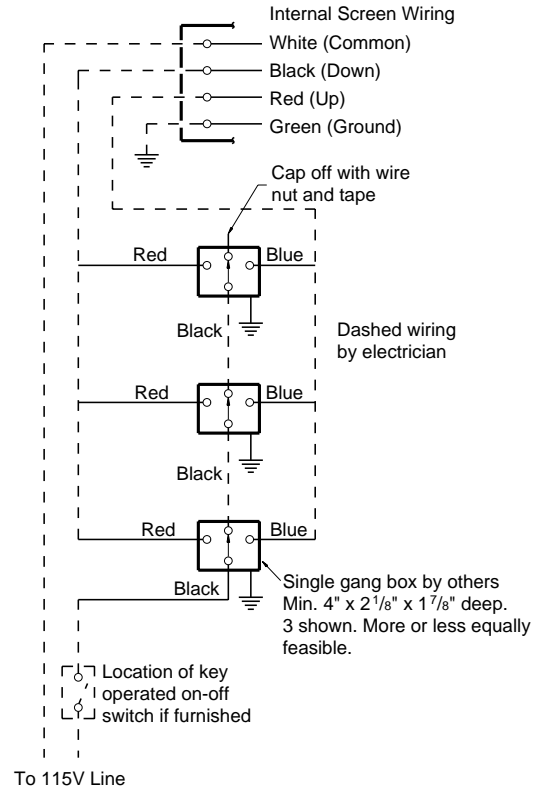
PROJECT: \_\_\_\_\_  
 \_\_\_\_\_  
 ARCHITECT: \_\_\_\_\_  
 CONTRACTOR: \_\_\_\_\_  
 SUPPLIER: \_\_\_\_\_  
 DATE: \_\_\_\_\_ REVISED: \_\_\_\_\_

# Wiring Diagrams

## Single Station Control



## Multiple Station Control



## Low Voltage (& Wireless) Control Wiring Diagram

